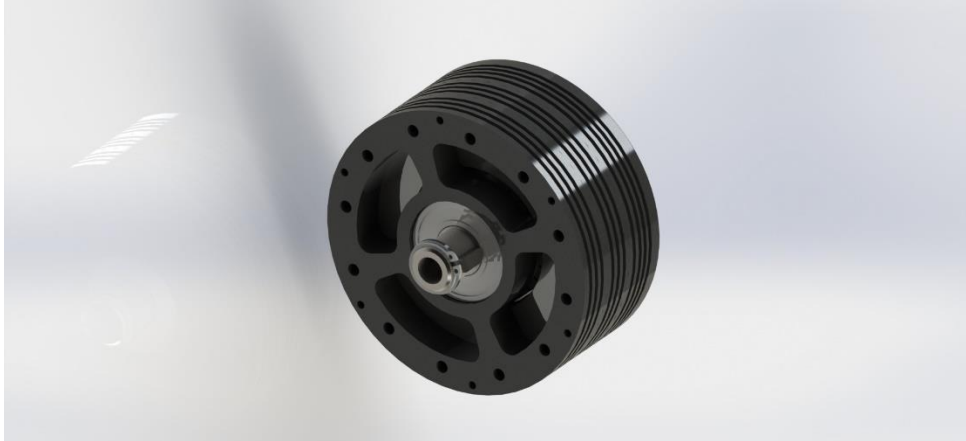


## High torque motor



Weight(g)	1100	Kt(N.m/A)	0,1
Dimension (mm)	Φ 115 , Lenght 52	Ke(V/rpm)	0,011
Voltage(V)	48	Kv(Rpm/V)	101
Nominal Rated Torque(N.m)	1.8	Pole pairs	14
Max Rated Torque(N.m)	5	Peak current(A)	45
Max speed@rated Torque(Rpm)	3200		

